

e powered by



**BOSCH**



**BOSCH LED REMOTE  
E-BIKE QUICK START GUIDE**

## Welcome to the family!

This quick-start guide explains the basic operation of the Bosch smart system on your bike. This guide is also available online in your language. Use the codes or links below to access the online guide.

Even if you've been riding a bike for years, you should read this guide, as well as:

- The Bicycle Owner's Manual that came with your bike
- The comprehensive Bosch smart system manual, found online at:

**TREK**

[trekbikes.com/manuals](http://trekbikes.com/manuals)



*Diamant*®

[diamantrad.com/  
bike-handbuecher](http://diamantrad.com/bike-handbuecher)



*Electra*

[electra.trebikes.com/  
electra-manuals](http://electra.trebikes.com/electra-manuals)



These manuals contain important safety information and useful suggestions about the proper use and maintenance of your bike and how to dispose of electrical components properly. If you do not have access to a computer or the Internet, you can request a printed manual from your local authorised retailer.



**Read all instructions.**

What you don't know could seriously hurt you or others. Be smart. Read and know before you go.

# **A few things to know about riding your new e-bike**

## **1. Start slow**

We know – fast is fun. But e-bikes take a bit of getting used to. It may be tempting to ramp your e-bike up to the fastest setting straight away, but we recommend taking it nice and easy the first few rides. Start on the lowest assist setting and learn the feeling of pedal assistance.

## **2. Brake sooner**

E-bikes are heavier than normal bikes and they move faster. More power, more speed and more weight. Once you get moving, you'll need more time to react, so you should start slowing down sooner on your e-bike than you would on a normal bike. When you're getting used to your new e-bike, start braking with a lighter hand and a gradual pull of the brake levers. And never grab just your front brake lever – brake with both front and rear evenly.

## **3. You're faster than you look**

E-bikes look just like regular bikes, so drivers and pedestrians might not expect you to be riding as fast as your e-bike allows. Ride with extra care and pay greater attention to your surroundings.

## **4. All bike rules still apply**

While your new e-bike will bring you a new level of freedom and fun, you're still responsible for knowing and following all the rules of the road, paths, and trails in your area. Have fun out there, but with greater speed, there is greater responsibility!

## Turn the bike ON or OFF



**ON|OFF:** Press and release  
**Pair with a smartphone:** Press and hold

The e-system will automatically turn off if the bike is not moved, nor any buttons pushed for 10 minutes.

## Lights (If wired to the e-system)



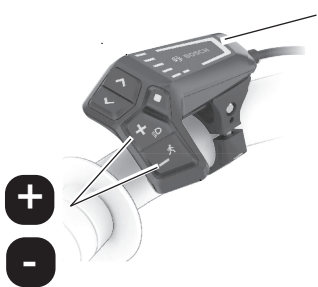
**ON|OFF**

**Note:** If front and/or rear lights are included with your bike, they may be programmed to turn ON or OFF when the bike is turned ON or OFF. In this case, the Lights button may not be functional.

# Pedal assistance

You've got places to be and people to see, so get going.

## Select an assist mode



Red = Turbo | Turbo

Purple = eMTB | Automatic

Blue = Tour+ | Tour+

Green = Eco | Eco

### Pedal assistance

#### Stops when:

- You stop pedalling
- You reach the maximum assist speed (Maximum speeds vary by region.)

#### Restarts when:

- You start pedalling again
- You are pedalling and your speed drops below the maximum assist speed

## Walk assistance

**⚠ WARNING:** Walk assistance should only be used when you are walking your bike. Never use walk assistance when you are riding your bike, or in situations where the wheels are not touching the ground.



While holding the button, walk the bike forwards or backwards to activate walk assistance. Shifting your bike into a higher gear increases the speed of walk assistance, up to approximately 4 mph/6 kph.

## Scroll screens/change settings

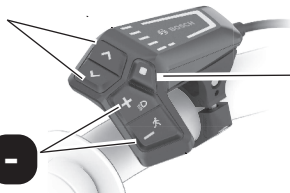
**Settings:** Language • Units • Time • Shift recommendation • Brightness • Settings reset



Next or previous screen



Scroll up or down



Press to access the second level of data.

Hold to reset trip data.

**Note:** Settings cannot be accessed while riding.

# Battery

## Charge the battery

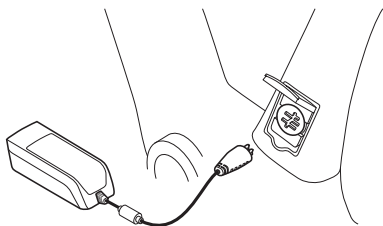
- The battery is supplied partially charged. For the best performance, charge the battery fully before riding your e-bike.
- The battery can be charged while installed on the bike or off the bike.
- LEDs indicate the level of battery charge.
- While the battery is charging, the top LED on the remote and the LEDs on the battery will flash.



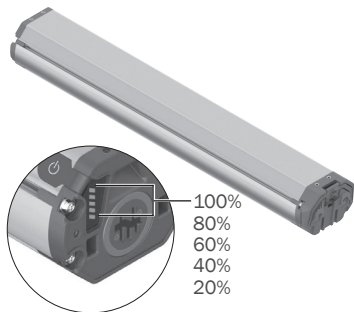
**WARNING:** Be safe. Follow these safety warnings when charging your battery:

- Only charge the battery with a Bosch smart system charger. Using the wrong charger risks the life of the battery and presents a potential fire hazard.
- Only use the charger in dry, indoor areas.
- Do not leave a charging battery unattended.
- When the battery is fully charged, disconnect the charger from the battery and wall socket.

## On the bike



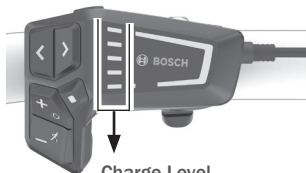
## Off the bike



LEDs flash while the battery is charging. All LEDs will be lit when fully charged.



## Battery charge level



### Charge Level

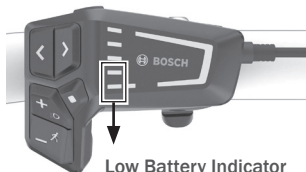
Blue bar = 20%

White bar = 10%

4 blue LEDs

+ 1 white LED

= 81% to 90% charged



### Low Battery Indicator

The bottom two LEDs change colour.

**2 orange:** 30% to 21%

**1 orange:** 20% to 11%

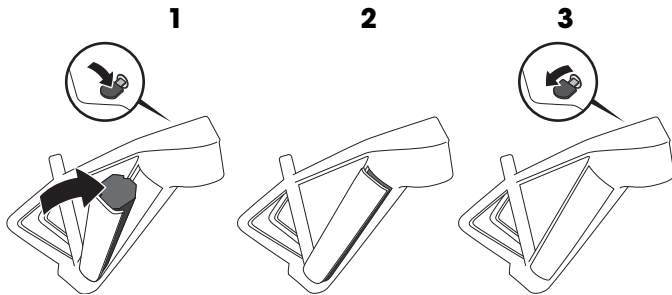
**1 red:** 10% to reserve

**1 red flashing:** reserve to empty

## Install or remove the battery

Before installing or removing the battery, make sure that the battery and bike are OFF.  
No LEDs should be illuminated on the remote or the battery.

**Install:** 1 ▶ 2 ▶ 3    **Remove:** 3 ▶ 2 ▶ 1

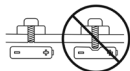


## Care for your battery and e-bike

Along with the fun of having an e-bike comes a few special warnings to keep you and your bike safe.

### Install accessories carefully

Consult with a certified e-bike technician before installing accessories. Using the wrong bolt in the wrong place could cause a short circuit in the electrical system and/or damage the battery, which might lead to over-heating. A battery that has been severely impacted could catch fire. If you suspect damage to your battery, visit your local bike shop immediately to have the battery inspected.



### Store the battery properly

If you won't be riding your e-bike for three months or more, remove the battery from the bike, and take the following steps to properly store it.

- Store your e-bike battery in a dry, ventilated location that is away from moisture, heat sources, and combustible or easily flammable objects.
- Store your battery at the recommended temperature. Storing your battery outside of this range could damage the battery, affect its performance or cause the battery to catch fire.



**Storage range:** 10 °C – 20 °C

- Monitor the battery charge. Keep the battery charged to a minimum of 30% to 60%. The battery can be damaged by deep discharge.
- When the battery charge is restored, remove the battery from the charger. Do not store your battery connected to the charger.

### **Transport your e-bike safely**

- The Bosch drive system adds weight to the bicycle. Overloading a bike rack can result in death or serious injury. Refer to your bicycle rack manual to make sure that it is compatible with your e-bike.
- Remove the battery from the e-bike and put it in the passenger cabin for safe and secure transport. A battery left on the bike could loosen during transport and become a hazard.
- Do not leave the battery in your car in the summer. The temperature inside your car could exceed safe temperatures for battery storage. Extreme heat could damage your battery or cause it to catch fire.

### **Wash your e-bike gently**

Do not submerge your e-bike or its components in water or wash them with a high-pressure hose. Water could contact the electrical system and damage it.

### **Repair and maintain your e-bike safely**

Always remove the battery before beginning any maintenance work on your e-bike. Never attempt to open any parts of the electrical system. Always contact your local bike shop to service any parts of the electrical system.

# Contact

## **TREK**

### **US Head Office**

Trek US  
Customer Service  
801 W Madison Street  
Waterloo, Wisconsin 53594 USA  
Tel.: 920.478.4678

### **European Head Office**

Bikeurope B.V./Trek Benelux  
Customer Service  
Ceintuurbaan 2-20C  
3847 LG Harderwijk  
The Netherlands  
Tel.: +31 (0)88-4500699

### **United Kingdom**

Trek Bicycle Corporation Ltd.  
9 Sherbourne Drive, Tilbrook,  
Milton Keynes, MK7 8HX  
Tel: +44 1908 360 140

### **Australia & New Zealand**

Trek Australia & New Zealand  
Customer Service  
PO Box 1747  
Fyshwick, ACT2609  
Australia

### **Australia**

Tel.: +61 2 6173 2400  
customerservice\_australia@trekbikes.com

### **New Zealand**

Tel.: 0800-873-569  
customerservice\_newzealand@trekbikes.com

## *Diamant*®

### **European Head Office**

Trek Fahrrad GmbH  
Auenstrasse 10  
CH-8600 Dübendorf  
Switzerland  
Tel.: 00800 8735 8735

## *Electra*

### **US Head Office**

Electra Bicycle Company  
364 2nd Street  
Encinitas, CA 92024  
USA  
Tel.: 1.800.261.1644

### **European Head Office**

Bikeurope B.V.  
Ceintuurbaan 2-20C  
3847 LG Harderwijk  
The Netherlands  
Tel.: +31 (0)88-4500699

**TREK**

*Electra*

*Diamant* 